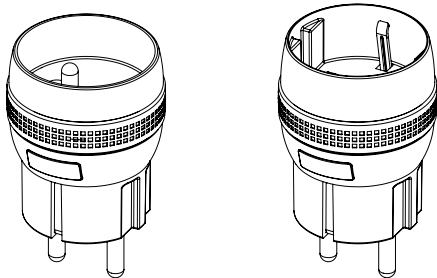


# USER GUIDE



## Micro Smart Plug METERING



Micro Smart Plug Type E  
Reference: MSP-2-1-01

Micro Smart Plug Schuko  
Reference: MSP-2-1-11

Power supply: 230V AC ~ 50Hz  
Self-consumption <1W

Max. power: 1840W continuous (Resistive load)

Metering of Instantaneous Power (W) and accumulated Energy (Wh)

Center radio frequency : 868.3 MHz

Occupied frequency band : 868.0 to 868.6 MHz

RF power Max : +3dBm

Range up to: 60m outdoor / 30m indoor

Operational temperature: 0°C / 35°C  
IP20

Memory capacity : 24 emitters

EEP (Profil EnOcean®): D2-01-0E

Dimensions: 46mm (Diameter) x 74mm (H)

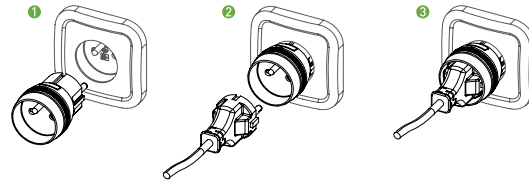
Weight: 67g

Warranty: 2 years

The NodOn® Micro Smart Plug + Metering allows to control (Power ON or Power OFF) an electrical appliance plugged on it: bedside lamp, electrical heater, coffee machine, etc. Once set up (see the set up procedures below), the NodOn® Micro Smart Plug can be controlled by different EnOcean® compliant emitters (wall switch, remote controller, sensor, window handle, card switch, etc.). Check the compliant emitters list below.

Thanks to build-in Metering features, the Micro Smart Plug can meter Instantaneous Power (W) and Accumulated Energy (Wh), between two buffer's reset.

## INSTALLATION

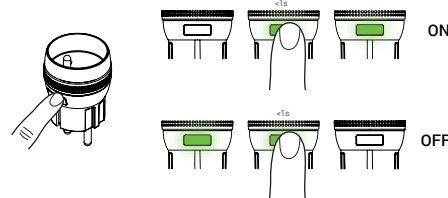


- 1 Plug the NodOn® Micro Smart Plug on your power outlet.
- 2 Plug the electrical appliance, you want to control, on the NodOn® Micro Smart Plug.
- 3 The Micro Smart Plug allows to switch ON (Power ON) or switch OFF (Power OFF) the electrical appliance you want to control. Switching ON or OFF can be done through the Micro Smart Plug local button, or any kind of emitter paired to the Micro Smart Plug (check the next steps of the user guide).

If the electrical appliance (ex.: bedside lamp) has an ON/OFF button, make sure it's positioned on "ON", in order that the power ON of the appliance by the Micro Smart Plug will switch ON the lamp.

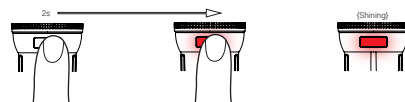
## MICRO SMART PLUG MODES

### LOCAL CONTROL



The Micro Smart Plug can be switched ON or OFF locally, through a short press on the local button. By default, the Micro Smart Plug is switched ON when the LED is green, OFF when the LED is OFF.

### PAIRING MODE



Press on the Micro Smart Plug button during 2 seconds until the LED becomes red. Release the button.

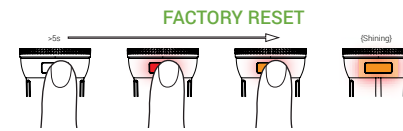
*The LED will then glow in red. The Micro Smart Plug is in "Pairing mode"*

To pair an emitter, follow the "Pairing procedures". To confirm that the pairing is OK, the LED will blink in green.

If the LED blinks orange during "Pairing mode", it means that the memory of the Micro Smart Plug is full, or that no emitter has been paired during the process.

In case of full memory, please unpair an emitter before being able to pair a new one.

Note: The NodOn® Micro Smart Plug supports the EnOcean® Remote Commissioning features. It can be put wirelessly into « Pairing mode » through a compatible home automation gateway.



To perform a factory reset, press on the Micro Smart Plug button during 5 seconds until the LED becomes orange. Release the button, the LED will blink red/green.

The factory reset will remove all the emitters from the Micro Smart Plug memory, and set all the parameters of the Micro Smart Plug to default value.

Factory Reset clears Energy (Wh) buffer as well.

## PAIRING PROCEDURES

Wall Switch, Remote Controller, etc.

EnOcean® Type "Rocker Switch" (EEP: F6-02-01)

To pair this type of emitter to the Micro Smart Plug:

- 1 Put the Micro Smart Plug in "Pairing mode".
- 2 Press any button of the emitter. The button pressed during the pairing process is the button which will switch ON the Micro Smart Plug. The opposite button will switch OFF the Micro Smart Plug. The other buttons of the emitter will not be able to control the Micro Smart Plug.

Pairing Mode	Usage	
	Button pressed on the emitter	Micro Smart Plug state
●	●	ON
○	○	OFF
○	●	ON
○	○	OFF
+	+	ON
-	-	OFF
-	+	ON
-	-	OFF



To unpair this emitter:

- 1 Put the Micro Smart Plug in "Pairing mode".

- 2 Press any button of the emitter

The emitter can't control the Micro Smart Plug anymore.

Key Card Activated Switch

EnOcean® Type "Key Card Activated Switch" (EEP: F6-04-01)

To pair this type of emitter to the Micro Smart Plug:

- 1 Put the Micro Smart Plug in "Pairing mode".
- 2 Insert or remove the card from the reader. The movement of the card done during the pairing process is the movement which will switch ON the Micro Smart Plug. The opposite movement will switch OFF the Micro Smart Plug
- 3 To initialize the Micro Smart Plug, insert and remove (or remove and insert) the card.

Pairing Mode	Usage	
	Card position	Micro Smart Plug state
INSERT	INSERTED	ON
	REMOVED	OFF
REMOVE	REMOVED	ON
	INSERTED	OFF



To unpair this emitter:

- 1 Put the Micro Smart Plug in "Pairing mode".

- 2 Insert or remove the card.

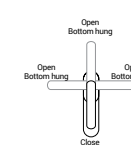
The emitter can't control the Micro Smart Plug anymore.

Window Handle  
EnOcean® Type "Window Handle" (EEP: F6-10-00)

To pair this type of emitter to the Micro Smart Plug:

- 1 Put the Micro Smart Plug in "Pairing mode".
- 2 Make the relevant movement with the handle according to your need. Check below table.

Note: "Bottom hung" and "Open" position are identically considered



Pairing Mode	Usage	
	Handle position	Micro Smart Plug state
Movement done during « Pairing mode »	OPENED or BOTTOM HUNG	ON
	CLOSED	OFF
CLOSE	CLOSED	ON
	OPENED or BOTTOM HUNG	OFF

To unpair this emitter:

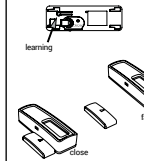
- 1 Put the Micro Smart Plug in "pairing mode".
- 2 Make any kind of movement with the handle.

The emitter can't control the Micro Smart Plug anymore.

Opening sensor  
EnOcean® Type "Magnetic Contact" (EEP: D5-00-01)

To pair this type of emitter to the Micro Smart Plug:

- 1 Put the Micro Smart Plug in "Pairing mode".
- 2 Press on the "learning" button of the opening sensor. The position (close or far) of the magnet from the sensor when the "learning" button is pressed is the position which will switch ON the Micro Smart Plug. The opposite position will switch OFF the Micro Smart Plug. Check the table below.



Pairing Mode	Usage	
	Magnet position when the « Learning » button is pressed	Micro Smart Plug state
CLOSE	CLOSE	ON
	FAR	OFF
FAR	FAR	ON
	CLOSE	OFF

To unpair this emitter:

- 1 Put the Micro Smart Plug in "pairing mode".

- 2 Press on the "learning" button

The emitter can't control the Micro Smart Plug anymore.

Motion sensor  
EnOcean® Type "PIR Sensor" (EEP: A5-07-01 / A5-07-02 / A5-07-03 / A5-08-01 / A5-08-02 / A5-08-03)

To pair this type of emitter to the Micro Smart Plug:

- 1 The status of the Micro Smart Plug (ON or OFF) chose before put in "pairing mode" will be associate with a presence detection
- 2 Put the Micro Smart Plug in "pairing mode".
- 3 Press the "learning" button of the presence sensor. When a presence is detected, the Micro Smart Plug will be in the state (ON or OFF) defined at step 1.

When no presence is detected, the Micro Smart Plug will be in the opposite state. Check the table below.



Pairing Mode	Usage	
	Sensor status	Micro Smart Plug state
ON	PRESENCE	ON
	NO PRESENCE	OFF
OFF	NO PRESENCE	ON
	PRESENCE	OFF

To unpair this emitter:

- 1 Put the Micro Smart Plug in "pairing mode".

- 2 Press on the "learning" button.

The emitter can't control the Micro Smart Plug anymore.

### Dry contact sensor

EnOcean® Type "Dry Contact" (EEP: A5-10-0A / A5-10-0B / A5-14-01 / A5-14-02 / A5-14-03 / A5-14-04)

To pair this type of emitter to the Micro Smart Plug:

- 1 The status of the Micro Smart Plug (ON or OFF) chose before put in "pairing mode" will be associate with a closed circuit.
- 2 Put the Micro Smart Plug in "pairing mode".
- 3 Press the "learning" button of the dry contact sensor.

When the contact is closed, the Micro Smart Plug will be in the state (ON or OFF) defined at step 1.

When the contact is open, the Micro Smart Plug will be in the opposite state. Check the table below.

Pairing Mode	Usage	
Micro Smart Plug state before « Pairing mode »	Contact status	Micro Smart Plug state
ON	CLOSE	ON
	OPEN	OFF
OFF	OPEN	ON
	CLOSE	OFF

To unpair this emitter:

- 1 Put the Micro Smart Plug in "pairing mode".
- 2 Press on the "learning" button.

The emitter can't control the Micro Smart Plug anymore.

## HOME AUTOMATION GATEWAY

### PAIR THE MICRO SMART PLUG WITH A HOME AUTOMATION GATEWAY

The NodOn® Micro Smart Plug can be controlled by an EnOcean® compliant Home Automation gateway.

For the pairing process of the Micro Smart Plug with the gateway, please refer to the user guide of your Home Automation gateway.

Below, a standard learning process:

- 1 Put your gateway in learning mode
- 2 Put the Micro Smart Plug in "Pairing mode".
- 3 The interface of your gateway will confirm the success of the pairing process.

Nota: To unpair the Micro Smart Plug, the procedure is the same

Find the list of the supported Home Automation gateway on [www.nodon.fr](http://www.nodon.fr) – "Support" section.

### PARAMETERS OF THE MICRO SMART PLUG

The NodOn® Micro Smart Plug is bi-directional and follows the D2-01-0E EnOcean® Equipment Profile (EEP):

PARAMETERS	D2-01-0E
No. of output channels	1
Switching	X
Local Control	X
Local control enable/disable	X
Taught-in devices enable/disable	X
User interface day/night mode	X
Default state configurable	X
Energy measurement	X
Power measurement	X
Measurement Roll-over	X
Measurement configurable	X
Measurement report on query	X
Measurement auto-reporting	X

### DEFAULT PARAMETERS

PARAMETERS	Default
Local Control enable/disable	Enable
Taught-in Devices enable/disable	Enable
User interface day/night mode	Day
Default state configurable	Previous State
Unit Energy Query	Wh
Unit Power Query	W
Report measurement	Query only
Measurement delta to be reported	0
Time between two subsequent actuator (minimum and maximum)	0
Repeater enable/disable	Disable
Repeater Level	OFF

### PARAMETERS PRESENTATION

#### Switching:

This option is to switch ON or OFF the Micro Smart Plug. If :

- Output value = (0x00) the Micro Smart Plug is switched OFF
- Output value between (0x01) and (0x64), the Micro Smart Plug is switched ON.

The Micro Smart Plug doesn't have any dimming function.

#### Local control:

This option is to activate or deactivate the local control of the Micro Smart Plug.

In both case, you can always access to the "Pairing mode" and "Factory Reset".

#### Taught-in devices:

If the parameter is activated, all the emitters paired to the Micro Smart Plug can control it.

If the parameter is deactivated, only the Home Automation gateway can control the Micro Smart Plug.

#### User interface day/night mode:

If the parameter is set to "Day", the LED will be green when the Micro Smart Plug is ON, and will be OFF when the Micro Smart Plug is OFF.

If the parameter is set to "Night", the LED will be OFF whatever the Micro Smart Plug state.

#### Default State:

This parameter allows defining the state of the Micro Smart Plug after a power failure.

#### Metering:

For details about all Metering parameters and commands, please report to the latest version of the "EnOcean® Equipment Profiles" (EEP) or your home automation gateway interface.

For more information about each parameter (function, implementation, etc.) and advanced set-up, please refer to the user guide of your Home Automation gateway.

If you are a Home Automation gateway manufacturer, please refer to the latest version of the "EnOcean® Equipment Profiles (EEP)".

## SUPPORTED PROFILES (EEP)

F6-02-01	F6-04-01	F6-10-00
D5-00-01	A5-07-01	A5-07-02
A5-07-03	A5-08-01	A5-08-02
A5-08-03	A5-10-19	A5-10-18
A5-10-1A	A5-10-1B	A5-10-1C
A5-10-1D	A5-10-01	A5-10-05
A5-10-08	A5-10-0C	A5-10-10
A5-10-13	A5-10-16	A5-10-17
A5-10-0A	A5-10-0B	A5-14-01
A5-14-02	A5-14-03	A5-14-04

## WARNING!

- Unplug the product only when it is powered OFF.
- Do not plug the products one behind the other.
- Do not use the product in a humid area.
- The product must be easy to access once plugged.

## PICTOGRAM



This product is compliant with all relevant European standards.



When sorting your waste, please observe the disposal regulations in force. Please place your waste in the facilities provided for that purpose and with all due respect for the environment.



This product must be used indoor only.



enocean®

This product is compliant with EnOcean® radio protocol.

## CONTACT

### Manufacturer & Importer:

ID-RF SAS  
121 rue des Hêtres  
45590 St CYR EN VAL (FRANCE)

## AFTER SALES

[www.nodon.fr](http://www.nodon.fr) section "support"  
contact@nodon.fr

For user guides in other languages, please visit  
[www.nodon.fr/notices](http://www.nodon.fr/notices)