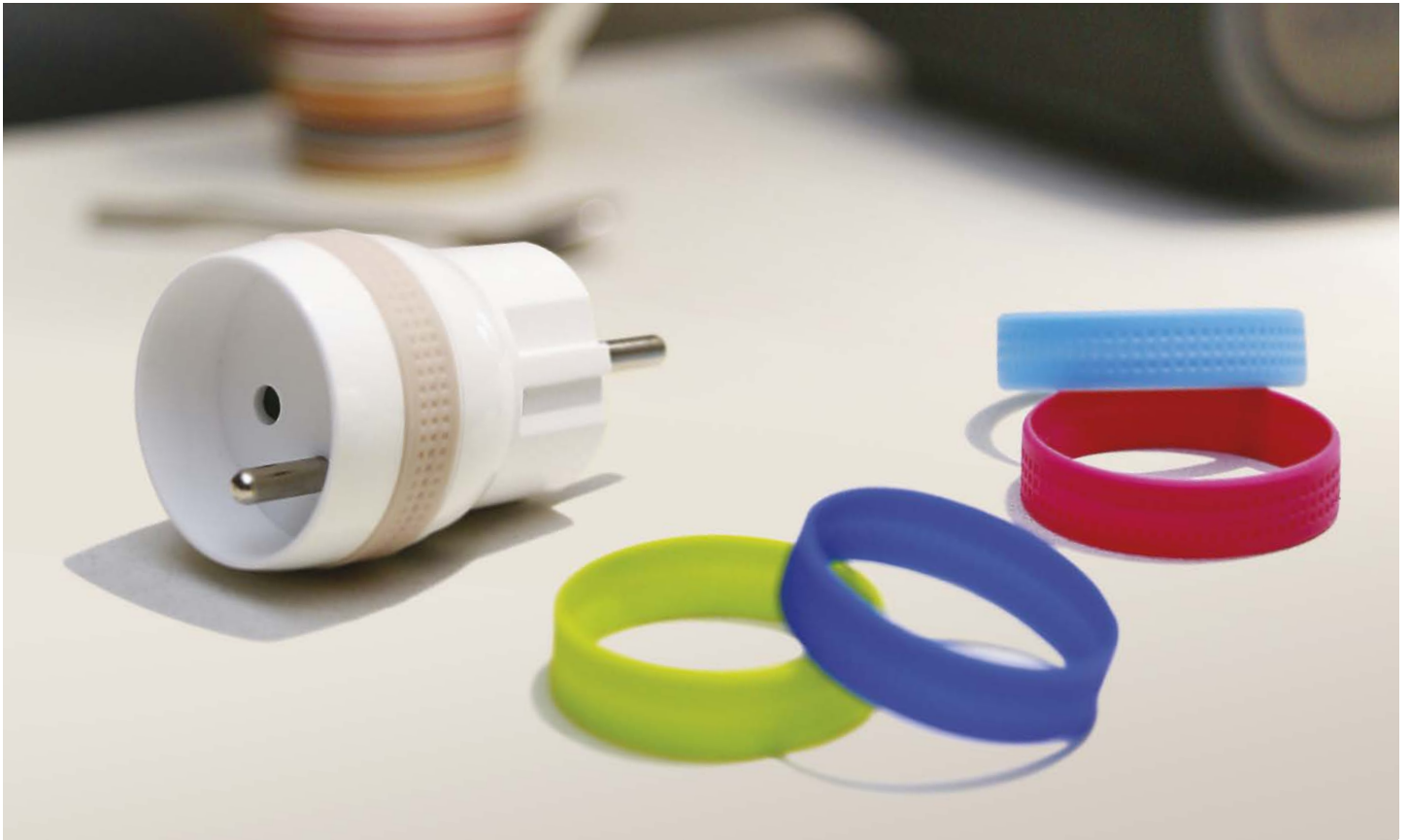


# MICRO SMART PLUG



## Features

The EnOcean Micro Smart Plug directly turns the plugged-in device into a connected remotely controllable one, using a wireless battery-free controller. Discrete, it measures the device's energy consumption and reports information to the home automation gateway, to help reduce electricity bills.



### ULTRA SMALL SIZE

The smallest EnOcean CE certified smart plug (8A) available on the market, very user-friendly for easy installation



### SIGNAL REPEATER

The Micro Smart Plug repeats messages from all other EnOcean devices



### METERING

Metering of instant and cumulated power to make energy savings



### SMART ACTUATOR

The Micro Smart Plug directly works with EnOcean devices and can be integrated into a home automation gateway ecosystem

## Technical specifications

**Power:** 230V AC 50Hz (EU)

**Max switching capacity:** 1.840W on resistive load

**Metering of instant power (W) and cumulated energy (Wh)**

**Consumption:** < 1W

**Radio frequency range:** 868.0 to 868.6 MHz

**Range:** up to 30m indoors

**Pairing:** up to 22 controllers

**EEP (EnOcean Profile):** D2-01-0E



List of compatible home automation gateways available on [www.nodon.fr](http://www.nodon.fr)

## Energy savings



Measure the device's energy consumption and reduce electricity bills



Automatically cut the power supply of multimedia devices at night\*

## Comfort



Automatically turn the kettle ON in the morning\*



Remotely control the lighting with a wireless battery-less controller

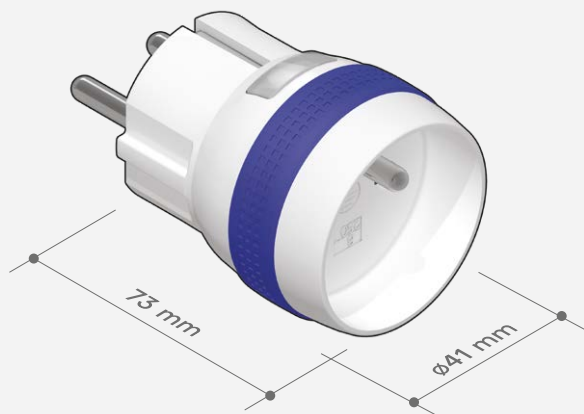
## Serenity



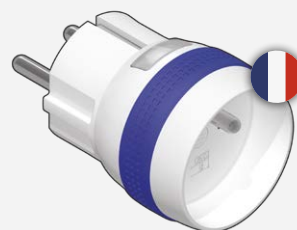
Turn a device OFF in case of unusual over-consumption\*

\*Home automation gateway needed

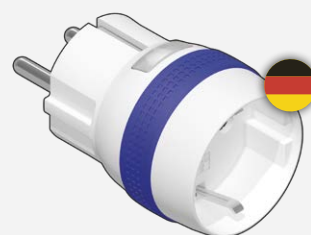
## Dimensions



## References



MSP-2-1-01  
EAN: 3700313921401  
Version Type E  
(French standard)



MSP-2-1-11  
EAN: 3700313921418  
Version Schuko  
(German standard)